



***IPM-Software
RHSControl Pro 2011
Upgrade and Installation Guide***

If you have any questions, call us at 1-800-944-5572.

4008 Vista Road Suite C250
Pasadena, Texas 77504

Phone (800) 944-5572 Fax (713) 944-2554

Upgrading and Installing RHSControl Pro 2011 with Windows NT 4.0/ 2000/XP/NT/ME/Vista/7

If you are using Windows NT, Windows 2000, or Windows XP, you must have Administrative Rights to install this software.

*If this is a **Server Installation**, you must install from a workstation to the server. Do not attempt to install to the server directly. **RHSControl Pro 2011** must be installed to the server from each of the workstations, which will need access to **RHSControl Pro 2011**.*

Select the appropriate installation instructions, based upon where the installation files are based (CD or Web)

Please read this before updating:

In order for the program to update properly you must be updating from RHS Control Pro 2010 or, if you are running RHSControl Pro 2006 or earlier, you must first uninstall the program.

When you uninstall the 2006 version, your site data will remain intact. Our uninstall does not remove the Chariot folder nor does it remove the data

Install From Web:

Please note: the following instructions assume you are running Internet Explorer 6.0 or later

1. Connect to the Internet.

If you do not know how to connect to the Internet, please contact the person responsible for IT with your management company.

2. Open **Internet Explorer**.

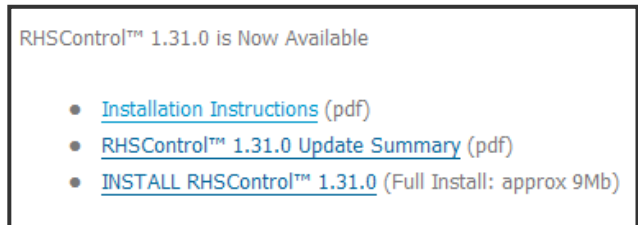
If you are unsure of how to access your Internet Browser, please contact the person responsible for IT with your management company.

3. In the Address field, type: www.ipm-software.net/update.html

and press **Enter**.
(see figure at right)



4. When the page loads, click the **INSTALL RHSControl 1.31.0** link to begin down-loading the update.



5. When prompted, Save the download to disk. Choose any convenient location.

6. When the download process is complete, close all open windows

7. Locate the file downloaded in steps 5 & 6

8. Open by Double-clicking on it.

a. This is an encrypted windows installation file which requires a password in order to proceed.

b. When prompted, enter the password (in the image at right):



c. Click **OK** to proceed.

9. After all files are extracted the **RHSControl Install Wizard** will automatically start.

10. Installing RHS continues on page 5

Install From CD:

1. Close all open Windows programs, including any anti-virus software.
2. To close down your anti-virus software, right-click the icon for the anti-virus software and choose [close], [disable], or [exit]. You may need to refer to your anti-virus software documentation for more information.
3. Place the **RHSControl Pro 2011** CD in the CD-ROM or DVD drive.
4. The Installation Main Menu should start to run automatically.



If the Installation does NOT begin automatically, please follow these instructions:

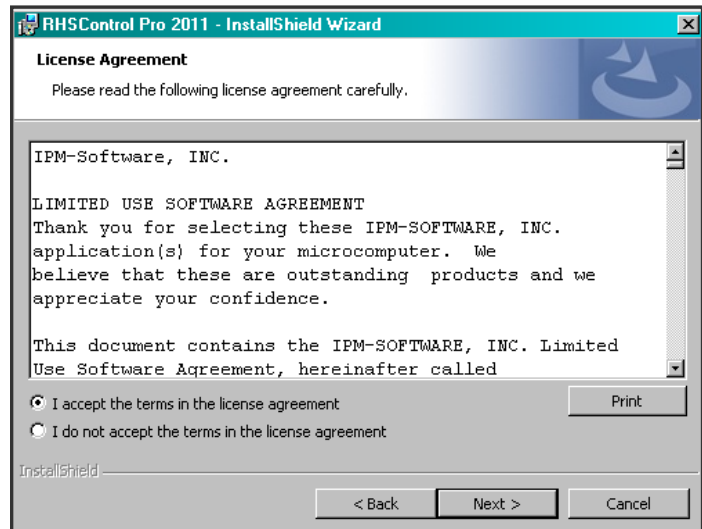
- a. Leave the **RHSControl Pro 2011** CD in your CD-ROM drive.
- b. On your desktop, Double Click on the **My Computer** icon to open Windows Explorer.
- c. Find your CD-ROM drive.
- d. Double Click on your CD-ROM drive to open the **RHSControl** folder.
- e. Browse through the **RHSControl** folder until you find the icon labeled **setup.exe**:
(If you cannot see the ".exe" part of "setup.exe," just find the icon labeled "setup.")
5. Double Click on **setup.exe** to start the Installation program.
6. Installing RHS continues page 5.

Installing RHS:

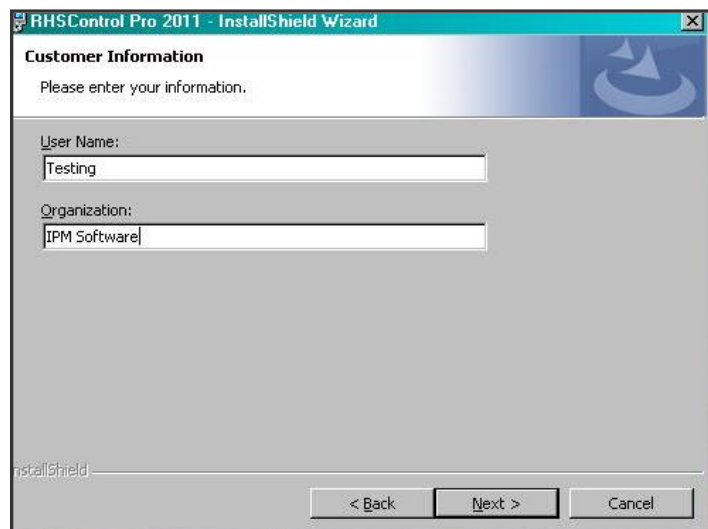
1. Click **Next** to bring up the **License Agreement** screen.



2. Read the License Agreement.
 - a. If you agree with the terms of the agreement, Click "I accept..." (You cannot go forward without clicking "I accept.")
 - b. Click **NEXT** to continue.

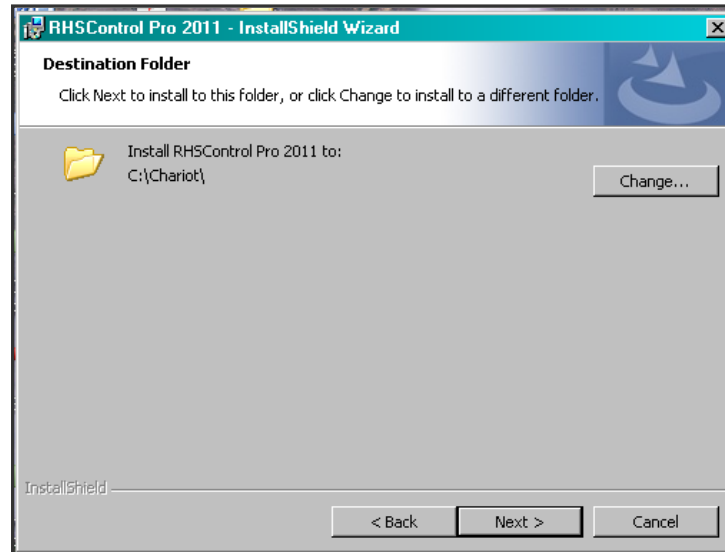


3. In the **Customer Information Screen**, type in your name and your company name. Click **NEXT** to bring up the **Destination Location** screen.





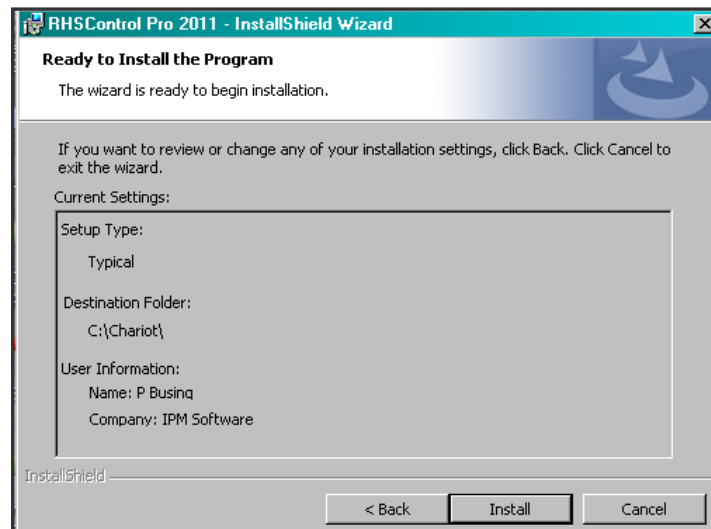
Do not change the name of the Chariot folder in any way. Your software will only work if you install it in the Chariot folder.



If this is a new installation of RHSControl PRO 2011 on a stand-alone computer – with no previous versions of RHSControl installed, you should accept the default location, [C:\chariot].

*If you are installing **RHSControl Pro 2011** on a server, Click the drive letter of your server. After the backslash, type "Chariot." The format must be: X:\Chariot, where 'X' stands for the letter of your server drive. Example: K:\Chariot, where K is the drive letter assigned to your server drive.*

4. Click **Next** to proceed to the **Current Settings Screen**.
5. Review the settings, and if all are correct, Click **Install** to continue.



6. A progress bar will monitor the installation process



11. Click **FINISH** to exit the installation process upon completion.

Congratulations! You have successfully installed **RHSControl Pro 2011!**

Creating a Shortcut to RHSControl Pro 2011 for Your Desktop

- Left Click on the "Start Button" to open the Start Menu.
- Position your pointer on "Programs" to open the Programs Menu.
- Position your pointer on "RHSControl for Windows" to open the RHSControl for Windows menu.
- Position your pointer on "**RHSControl Pro 2011**" and RIGHT Click to open a new menu.
- Position your pointer on "Send To" to open the next menu.
- Left Click on "Desktop (create shortcut)"

Your new **RHSControl Pro 2011** appears on your desktop.

If you have any questions, call us at 1-800-944-5572
or access our Live Chat at www.ipm-software.net and click
Need Help.



4008 Vista Road Suite C250
Pasadena, Texas 77504

Phone (800) 944-5572 Fax (713) 944-2554